

DS-2CC102/112/192P(N)-IR3/IR5 IR Bullet Camera



Specifications

	DS-2CC102P(N)-IR3(IR5)	DS-2CC112P(N)-IR3(IR5)	DS-2CC192P(N)-IR3(IR5)
Camera			
Image sensor	1/3" Sony CCD		
Signal system	PAL / NTSC		
Effective pixels	PAL: 500 (H) × 582 (V) NTSC: 510 (H) × 492 (V)	PAL: 752 (H) × 582 (V) NTSC: 768 (H) × 494 (V)	PAL: 752 (H) × 582 (V) NTSC: 768 (H) × 494 (V)
Min. illumination	0.1 lux@F1.2, AGC on, 0 lux with IR 0.2 lux@F1.8, AGC on, 0 lux with IR		
Shutter time	PAL: 1/50s ~ 1/100,000s NTSC: 1/60s ~ 1/100,000s		
Lens	"-IR3" series: 12mm @F1.8 (3.6mm, 6mm, 8mm, 16mm optional), Angle of view: 22.72° (12mm) "-IR5" series: 16mm @F1.8 (3.6mm, 6mm, 8mm, 12mm optional), Angle of view: 16.4° (16mm)		
Lens mount	M12		
Day & night	Electronic		
Horizontal resolution	420 TVL	480 TVL	540 TVL
Synchronization	Internal synchronization		
Video output	1Vp-p composite output (75Ω / BNC)		
S/N ratio	More than 48 dB		
BLC	On		
General			
Operating conditions	-10°C ~ 60°C (14°F ~ 140°F) Humidity 90% or less (non-condensing)		
Weather-proof rating	IP66		
IR range	"-IR3" series: approx. 30 ~ 40m "-IR5" series: approx. 50 ~ 60m		
Power supply	12 VDC ± 10%		
Power consumption	IR3: 6W max IR5: 8W max		
Dimensions	Φ 86.5 × 83 × 165.5 mm (Φ 3.41" × 3.27" × 6.52")		
Weight	1000g (2.20 lbs)		

Available models

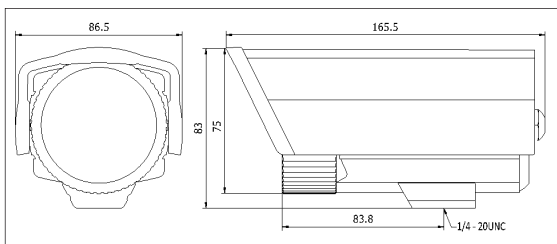
DS-2CC102P-IR3, DS-2CC102N-IR3, DS-2CC102P-IR5, DS-2CC102N-IR5, DS-2CC112P-IR3, DS-2CC112N-IR3, DS-2CC112P-IR5, DS-2CC112N-IR5, DS-2CC192P-IR3, DS-2CC192N-IR3, DS-2CC192P-IR5, DS-2CC192N-IR5



Key Features

- Compact design
- 1/3" Sony CCD
- Low illumination
- Auto white balance, auto gain control, electronic shutter control and backlight compensation
- Internal synchronization
- IP66 rating

Dimensions



Accessories



DS-1212ZJ-S
(Indoor wall mount)

DS-1213ZJ-S
(Outdoor wall mount)