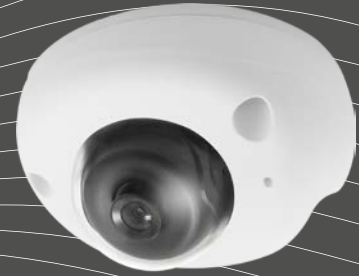


1.3 Megapixel WDR Starlight Finder IP miniDome Camera SNC-WD21335S

Preliminary

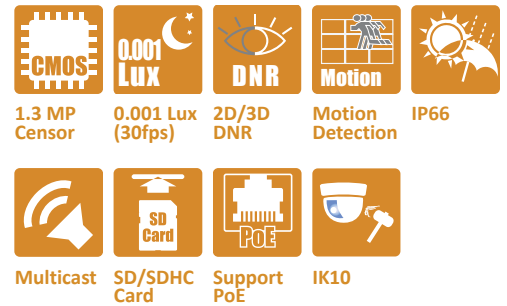
- 1/3" Sony 1.3 Megapixel Progressive Exmor™ CMOS Sensor
- 1280x1024@30fps (SXGA) ; H.264, MPEG4, M-JPEG
- Color:0.03Lux@F1.2, B/W:0.001Lux@F1.2
- 2D/3D Noise Reduction
- Motion Detection
- Built-in Microphone & Multicast Support
- Support Micro SD/SDHC Card
- Support 12Vdc / PoE Power Input
- Support ONVIF Profile S



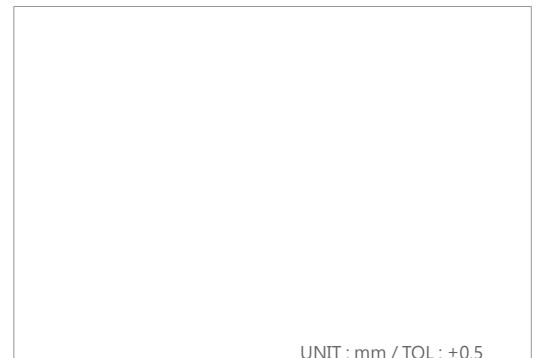
Specifications

Video	Image Sensor	1 / 3" Sony 1.3 Megapixel Progressive Exmor™ CMOS Sensor	
	Video Resolution/Frame Rate	1280x1024@30fps(SXGA), 1280x960@30fps, 1280x720@30fps, 720x480@30fps	
	Video Frame Rate	Up to 30fps for All Video	
	Video Compression	H.264, MPEG4, M-JPEG	
	Minimum Illumination	Color:0.03Lux@F1.2, B/W:0.001Lux@F1.2	
	WDR/HDR	Yes	
	Second Video Output	1.0Vp-p Composite, 75Ω (BNC)	
	Signal to Noise Ratio	More than 52dB (AGC off)	
	Mechanical IR Cut Filter	Automatically Switches (B/W Mode<2Lux, Color Mode>5Lux); External IR LED ; Working Distance Compatible with Infrared Illuminator	
	Function	Menu	Can Be Set Via Browser
		Day&Night Mode	Color / B&W / Auto / External
		Auto Electronic Shutter	1/100,000 to 1/2 sec.
		Manual Electronic Shutter	1/2, 1/4, 1/8, 1/15, 1/30, 1/60, 1/120, 1/250, 1/500, 1/750, 1/1,000, 1/1,500, 1/2,000, 1/10,000, 1/100,000 sec.
White Balance		Auto_wide / Auto_normal / Sunny / Shadow / Indoor / Lamp / FL1 / FL2	
DNR ; Sense Up		3D/2D DNR ; ---	
Language		English / Japanese / Chinese (Traditional, Simplified) / Russian / Hungarian / German / Persian / Spanish / Polish / Dutch	
Image Setting		Brightness / Contrast / Saturation / Sharpness / DeNoise / EV Compensation / AWB / WDR / Rotation / Exposure Mode / Exposure Priority / Auto IRIS / BLC / ROI	
Integrated Video Detection		Motion Detection	
Timer Clock		Yes	
Camera Control Interface		Pelco D, Pelco P, Customer	
Network		Browser	IE 8.0 or Above
		Ethernet	10/100M/1000M Auto Negotiation
	Bit Rate Transmission	64 up to 12,000 Kbps	
	Supported Protocols	TCP IP, UDP, HTTP, SMTP, FTP, NTP, DNS, DHCP, PPPoE, ARP, UPnP, QoS RTSP, RTP, SNMP, TRAP, Ethernet (RJ-45 Wired 10/100/1000M Base-TX)	
	Video Streaming	H.264, MPEG4 and M-JPEG Dual/Triple Streaming	
	Audio Streaming	Two-way Audio ; G.711 (μLaw), 8KHz/16KHz Sample Rate	
	Users	Support 9 Users	
	Security	ID/Password Protection	
	Alarm Trigger	File Upload via FTP and Email/Notification via Email, HTTP, External Digital Output Activation, micro SD Recording	
	Multicast	Support Multicast Function	
	General	Connector	RJ45/PoE, DC Power, Reset Button, BNC
		Automatic IRIS ; Connector	DI/DO/RS485, Micro SD Slot, ---
		Lens Mount	Built-in Board Lens
Lens, Angle of View (H)		f4.0mm	
Water Resistance		IP66	
Max. Breaking Strength		IK10	
Power Supply ; Consumption		12Vdc / PoE ; 4W	
Operation ; Storage Temp.		-10°C ~ 50°C ; -20°C ~ 60°C	
Operation ; Storage Humidity		Maximum: RH80% ; RH90%	
Dimensions		110(DIA)x57(H)mm	
Net Weight		340g	
Accessories Option	---		

*Specifications are unfixed and do not apply to customized projects. miniDome 140422



Dimensions



UNIT : mm / TOL : ±0.5