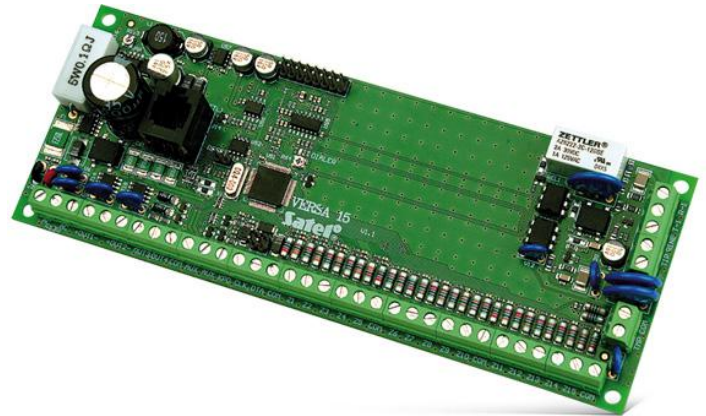


VERSA 15

INTRUDER ALARM CONTROL PANEL

Control panels for security of small and moderate size facilities, offering versatile security functionality. They stay ahead of the competition by the wired and wireless extension capacities and advanced communication functions available by dedicated GSM/GPRS and TCP/IP communicators.

- EN50131 Grade 2 compliance
- 15 zones expandable up to 30:
 - NO, NC, EOL, 2EOL/NO, 2EOL/NC zone configurations
 - support for vibration and roller shutter detectors
 - detectors supervision
- additional tamper input
- 4 up to 12 programmable outputs
- 2 supply outputs
- 2 partitions:
 - 3 arming modes for each partition
 - arming/disarming by users or timer controlled
- communication bus for keypads, readers and expansion modules
- RS-232 port (RJ type socket) for panel programming built-in telephone dialer for:
 - reporting (SIA, ContactID, other)
 - personal messaging (8 telephone numbers, 64 text/16 voice messages)
 - remote programming (built-in 300 bps modem)
- support for GSM/GPRS communicator:
 - SMS/GPRS reporting
 - voice/SMS messaging
- support for TCP/IP communicator:
 - e-mail messaging
 - TCP/IP reporting
- system operation via:
 - LCD or LED keypads (up to 6)
 - **VERSA-LCDM-WRL** wireless keypads (**VERSA 15 Firmware v1.04** or newer)
 - **INT-TSG** touchscreen keypads (**INT-TSG Firmware v1.03** or newer, **VERSA 15 Firmware v1.04** or newer)
 - proximity tags/cards (up to 6 readers)
 - remote control key fobs
- easy update of firmware for enhancing the panel with new features
- support for 31 user codes:
 - 30 standard users
 - 1 installer
- individual naming for easy system operation and management
- timers:
 - 4 timers with holidays support
- event log with 2047 entries
- automatic diagnostics of basic system components
- built-in 2 A switching mode power supply:
 - overload protection
 - deep discharge protection
 - battery charging supervision
- option of not reporting server SATEL failure to the control panel (VERSA Firmware 1.08 or newer)



TECHNICAL DATA

Environmental class	II
Protection class	Grade 2
Control panels	12 V DC
Low current programmable outputs rating	50 mA
High current programmable outputs rating	1100 mA
Power supply rating	2 A
Board dimensions	180 x 68 mm
Operating temperature range	-10...+55 °C
Nominal supply voltage (±10%)	18 V AC
Standby mode current consumption	135 mA
Max. current consumption	160 mA
Weight	131 g