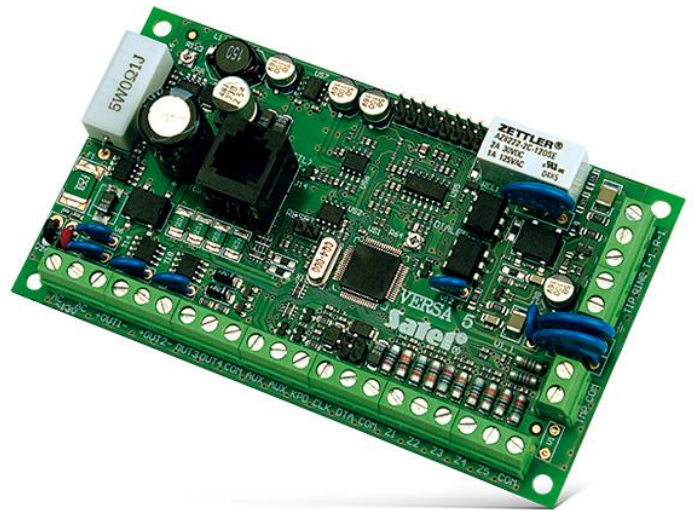


VERSA 5

INTRUDER ALARM CONTROL PANEL

- EN50131 Grade 2 compliance
- 5 zones expandable up to 30:
 - NO, NC, EOL, 2EOL/NO, 2EOL/NC zone configurations
 - support for vibration and roller shutter detectors
 - detectors supervision
- additional tamper input
- 4 up to 12 programmable outputs
- 2 supply outputs
- 2 partitions:
 - 3 arming modes for each partition
 - arming/disarming by users or timer controlled
- communication bus for keypads, readers and expansion modules
- RS-232 port (RJ type socket) for panel programming built-in telephone dialer for:
 - reporting (SIA, ContactID, other)
 - personal messaging (8 telephone numbers, 64 text/16 voice messages)
 - remote programming (built-in 300 bps modem)
- support for GSM/GPRS communicator:
 - SMS/GPRS reporting
 - voice/SMS messaging
- support for TCP/IP communicator:
 - e-mail messaging
 - TCP/IP reporting
- system operation via:
 - LCD or LED keypads (up to 6)
 - **VERSA-LCDM-WRL** wireless keypads (**VERSA 5 Firmware v1.04 or newer**)
 - **INT-TSG** touchscreen keypads (**INT-TSG Firmware v1.03 or newer, VERSA 5 Firmware v1.04 or newer**)
 - proximity tags/cards (up to 6 readers)
 - remote control key fobs
- easy update of firmware for enhancing the panel with new features
- support for 31 user codes:
 - 30 standard users
 - 1 installer
- individual naming for easy system operation and management
- timers:
 - 4 timers with holidays support
- event log with 2047 entries
- automatic diagnostics of basic system components
- built-in 1 A switching mode power supply:
 - overload protection
 - deep discharge protection
 - battery charging supervision
- option of not reporting server SATEL failure to the control panel (VERSA Firmware 1.08 or newer)



TECHNICAL DATA

Environmental class	II
Protection class	Grade 2
Control panels	12 V DC
Low current programmable outputs rating	50 mA
High current programmable outputs rating	1100 mA
Power supply rating	1 A
Operating temperature range	-10...+55 °C
Nominal supply voltage (±10%)	18 V AC
Standby mode current consumption	70 mA
Max. current consumption	90 mA
Weight	100 g