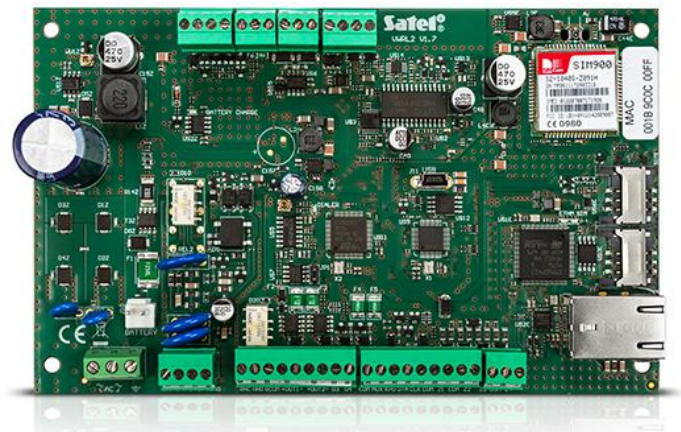


VERSA Plus

CONTROL PANEL

The **VERSA Plus** control panel is designed for protection of small and medium-sized premises. It allows you to create a wired or wireless system, as well as a hybrid one, which combines both these kinds of system. It is compatible with **ACU-120** and **ACU-270** controllers, which offer an excellent operating range for the **ABAX** family devices – even up to 500 m in the open, which means an area of 78.5 hectares.

The **VERSA Plus** is the only solution that combines features that were previously only available by using several separate devices. **ETHM**, **GSM**, **INT-VG** and **INT-AV** modules as well PSTN dialer are integrated on its mainboard. As a result, the **VERSA Plus** control panel enables communication via three channels (Ethernet, PSTN, GSM/GPRS), thus ensuring effective transfer of information.



- EN50131 Grade 2 compliance
- 4 programmable wired zones:
 - support for NO and NC type detectors, and roller shutter and vibration detectors
 - support for EOL and 2EOL configuration
- additional tamper input, NC type
- 5 programmable wired outputs:
 - 2 high-current outputs
 - 2 high-current outputs, OC type
 - 1 relay output
- 3 power outputs
- output for connecting dedicated enclosure-mounted piezoelectric transducer (acoustic signaling),
- maximum number of programmable zones: 30
- maximum number of programmable outputs: 12
- system subdivision into 2 partitions:
 - each zone can be assigned to two partitions
- system control by means of:
 - LCD or LED keypads
 - **VERSA-LCDM-WRL** wireless keypads
 - **INT-TSG** touchscreen keypads
 - proximity cards
 - remote control keyfobs
- integrated PSTN module to enable:
 - reporting (SIA, ContactID, etc.)
 - voice messaging (8 numbers, 16 messages)
 - remote programming (300 bps modem) with **DLOADX** program
- integrated GSM/GPRS module to enable:
 - voice/SMS messaging
 - SMS/GPRS reporting
 - support for 2 SIM cards
 - programming with **DLOADX** program
- built-in ETHM module to enable:
 - e-mail messaging
 - control by means of **VERSA CONTROL** application offering PUSH notifications
 - reporting to monitoring station
 - programming with **DLOADX** program
- built-in voice module:
 - nearly 13 minutes for messages to be used in voice menu
 - over 4 minutes for 16 telephone notification messages (with message duration up to 16 seconds)

- built-in USB-HID socket
- memory of 2047 events
- capability to handle 30 users and assign to each of them:
 - code
 - proximity card
 - keyfob
- 4 timers to enable automatic:
 - arming/disarming partitions
 - control of outputs (turning light ON/OFF, watering garden, etc.)
- plug-in terminal blocks
- option of not reporting server SATEL failure to the control panel (VERSA Firmware 1.08 or newer)

TECHNICAL DATA

Voice messages	16
Messaging telephone numbers	8
Low current programmable outputs rating	50 / 12 VDC mA
Event log	2047
Partitions	2
Timers	4
Power supply rating	2 A
Enclosure dimensions	266 x 286 x 100 mm
Board dimensions	173 x 105 mm
Operating temperature range	-10...+55 °C
Supply voltage (±15%)	18 V AC, 50-60 Hz
Maximum humidity	93±3%
Current consumption from battery - maximum	340 mA
Current consumption from battery - standby	180 mA
Battery failure voltage threshold (±10%)	11 V
Battery cut-off voltage (±10%)	10,5 V
Environmental class according to EN50130-5	II
Current consumption from the 230V network in standby	120 mA
Maximum current consumption from the 230V network	200 mA
Power supply output voltage	12 ±15% V DC
Programmable wired inputs	4
Maximum number of programmable inputs	30
Programmable wired outputs	5
Maximum number of programmable outputs	12
Supplying outputs	3
Communication buses	1
Manipulators	up to 6
Security grade according to EN 50131	Grade 2
Current-carrying capacity, AUX output	500 mA / 12 V DC
Recommended transformer	40 VA
Mass (incl. enclosure and accessories)	1250 g
Users	30
Notification e-mail addresses	8
Text messages	64
Current-carrying capacity of +VR output	200 mA / 12 V DC
Current-carrying capacity of KPD output	500 mA / 12 V DC
Current-carrying capacity of programmable relay output	1000 / 24 VDC mA
Current-carrying capacity of programmable high-current outputs	1100 / 12 VDC mA
Output voltage range	10,5 V...14 V DC
Battery charging current	800 mA