

Hyper Wide Dynamic Dome Camera (Sony Effio-A)

MTC-WD213EF

Features



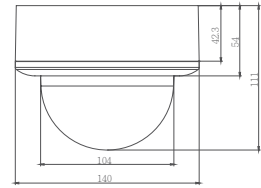
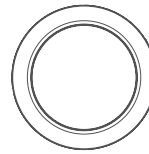
3-Axis Gimbal Mechanism
Indoor, Plastic



Sony Effio A
750TVL

MTC-WD213EF

- ◆ 1/3" Hyper Wide Dynamic Color Camera (Sony Effio-A)
- ◆ Color:720TVL, B/W:750TVL
- ◆ Color:0.03Lux@F1.2, B/W:0.01Lux@F1.2, Sense-up: 0.0001Lux
- ◆ Powerful 512X WDR (54dB)
- ◆ Auto Defog / Privacy Zone Mask
- ◆ High Light Compensation (HLC) / Lens Shading Compensation
- ◆ 2D/3D Noise Reduction / Digital Image Stabilizer
- ◆ Sense Up (512x) Functions
- ◆ Motion Detection / Intelligent scene recognition`
- ◆ IR Optimizer



Tol:±0.5 Unit:mm

SPECIFICATIONS

MTC-WD213EF	
TV System	PAL NTSC
Image Sensor	1/3" Sony 960H Super HAD CCD II
Number of Total Pixels (CCD)	1020(H)x596(V) 1020(H)x508(V)
Resolution ; DSP	Color:720TVL, B/W:750TVL ; Sony Effio-A
Minimum Illumination	Color:0.03Lux@F1.2, B/W:0.01Lux@F1.2, Sense-up: 0.0001Lux
Wide Dynamic Range	512X Normal Camera
Video Output	1.0Vp-p Composite, 75Ω (BNC)
Signal to Noise Ratio (S/N)	More than 55dB (AGC off)
Gamma Correction	0.45
Mechanical IR Cut Filter (ICR)	Option
IR LED ; Working Distance ; IR Optimizer	---
Menu	OSD
Title	TITLE (LOCATION)
Synchronizing System	INTERNAL / LINE LOCK
Day&Night Mode	COLOR / B&W / AUTO / EXTERNAL / SCHEDULE
Electronic Shutter	AUTO (1/50(60)~1/10,000 sec.) / MANUAL:256 FLD, 128 FLD, 64 FLD, 32 FLD, 16 FLD, 8 FLD, 4FLD, 2 FLD, 60~1/2000, 1/3000, 1/4000, 1/6000, 1/10000, 1/30000,1/60000, 1/100000 (S)
Automatic Gain Control	0~44.8 DB
White Balance	ATW / AWB / 3200K / 6300K / MANUAL / PUSH LOCK
WDR ; BLC	LEVEL/BRIGHT AREA/DARK AREA/CLEAR FACE ; HLC / BLC / OFF
Flickerless ; Defog	ON / OFF ; Auto
Dynamic Noise Reduction	2D/3D/SMART DNR
Sense Up	AUTO (Limit x2~x512) / OFF
Digital Image Stabilizer (DIS)	ON / OFF
Language	ENGLISH / SIMPLIFIED CHINESE , TRADITIONAL CHINESE, JAPANESE
E-Zoom	x1~x256
Motion Detection ; Privacy	ON / OFF (24x16 Zones) ; ON / OFF (15 Zones Programmable, Quadrangle Mosaic)
Camera Control Interface	---
Automatic IRIS ; Connector	DC
Lens Mount	Built-in DC Auto IRIS Lens
Lens, Angle of View (H)	f2.8~12mm
Water Resistance	---
Max. Breaking Strength	---
Power Supply ; Consumption	12Vdc:2W, 12Vdc/24Vac:3.5W
Operation ; Storage Temp.	-10°C~50°C ; -20°C~60°C
Operation ; Storage Humidity	Maximum: RH80% ; RH90%
Dimensions	140(DIA)x112(H)mm
Net Weight	500g

*Specifications are unfixed and do not apply to customized projects. 1031-140718